



ENSTROM HELICOPTER CORPORATION

2209 22ND STREET, P.O. BOX 490, MENOMINEE, MICHIGAN 49858-0490 USA

SERVICE DIRECTIVE BULLETIN

SERVICE NOTE NO. 0009
Revision A

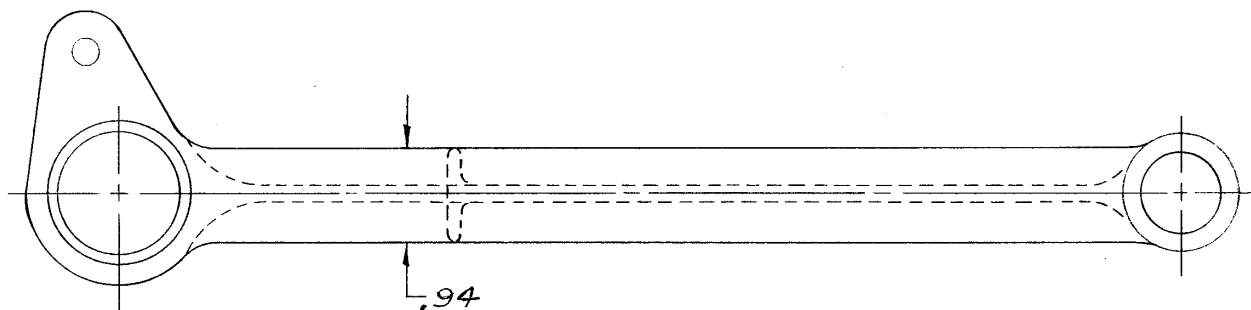
Date: May 30, 1973
Subject: Idler Yoke Assembly - P/N 28-13292 Rev. A
Model: F-28A - All Serial Numbers
Compliance: As Noted

On 23 September 1971, Service Note No. 0009 imposed a mandatory inspection of the 28-13292 idler yoke assembly.

A redesigned 28-13292 yoke casting (Revision A) is now available which will eliminate this mandatory inspection. The redesigned yoke can easily be identified by the .94" width of its flanges (see attached sketch).

Any helicopter equipped with the redesigned yoke is exempt from the mandatory visual inspection imposed by the original service note.

These new yokes are immediately available in stock and may be ordered at your convenience.





ENSTROM HELICOPTER CORPORATION

2209 22ND STREET, P.O. BOX 490, MENOMINEE, MICHIGAN 49858-0490 USA

SERVICE DIRECTIVE BULLETIN

REFERENCE ONLY

SERVICE NOTE NO. 0009

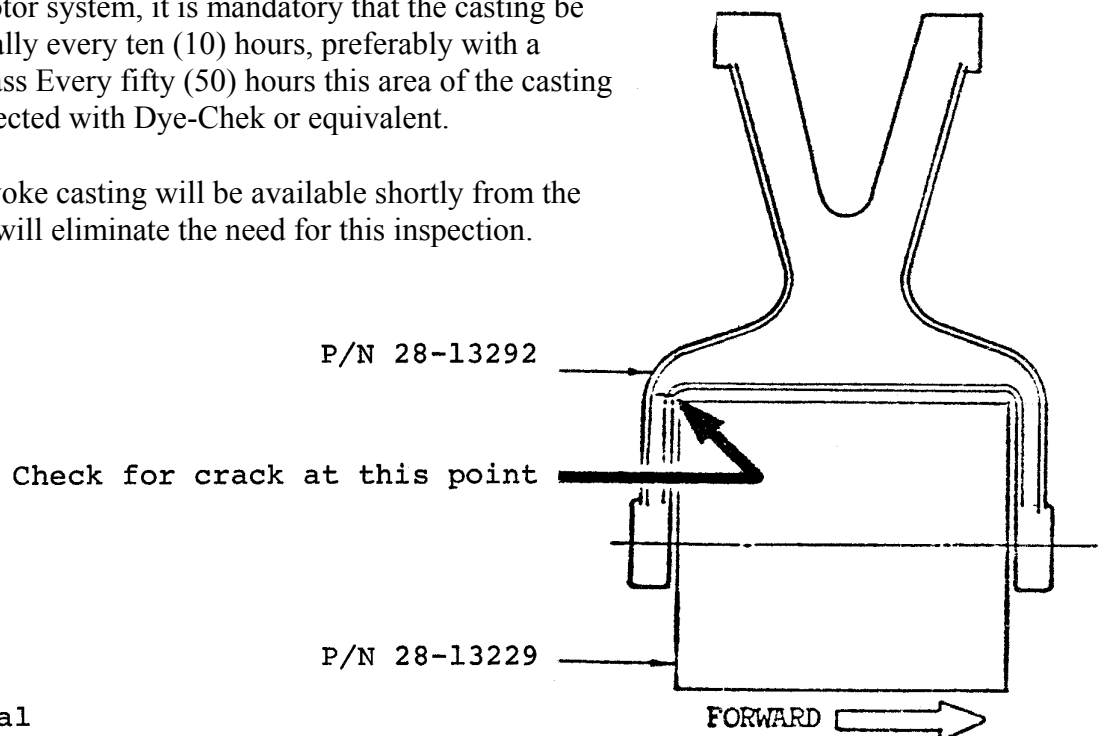
FAA Approved

Date: September 23, 1971
Subject: Idler Yoke Assembly - P/N 28-13292
Model: F-28A - All Serial Numbers
Compliance: As Noted

Several occurrences of cracks have been reported in the Idler Yoke Assembly, P/N 28-13292. These cracks occur at the aft portion of the casting and in the corner nearest the aft outside diameter of the idler pulley (see sketch). Two of the cracks were noted after 1300 - 1400 hours of service and one after only 100 hours.

To avoid complete failure of the casting and possible loss of power to the rotor system, it is mandatory that the casting be inspected visually every ten (10) hours, preferably with a magnifying glass. Every fifty (50) hours this area of the casting should be inspected with Dye-Chek or equivalent.

A redesigned yoke casting will be available shortly from the factory which will eliminate the need for this inspection.



DER Approval