
SERVICE INFORMATION LETTER

SERVICE INFORMATION LETTER NO. T-076

DATE: June 24, 2025

1. SUBJECT: Tail Rotor Transmission (Gearbox), Premature Gear Wear
2. MODEL: 480 and 480B
3. EFFECTIVITY: Any helicopter S/N that is equipped with a tail rotor gearbox S/N that matches any of the S/Ns listed in Table 1.
Any stock/spare/inventory tail rotor gearbox S/N that matches any of the S/Ns listed in Table 1.

4. BACKGROUND:

Enstrom has received several tail rotor gearboxes that were removed from service due to tail rotor chip indications. The gearboxes, which were returned from two operators, had not yet reached TBO. A preliminary inspection of the gearboxes revealed premature wear of the gears. The gears have been traced back to the same manufacturer.

This Service Information Letter (SIL) is intended to provide owner/operators with the following:

- A serial number listing of the tail rotor gearboxes assembled with gears sourced from the same manufacturer
- Reiteration of the methods prescribed in the maintenance procedures to ensure detection for premature gear wear

5. COMPLIANCE:

- 5.1 Identify the S/N of the tail rotor gearbox by locating the S/N engraved or laser etched on the left side of the tail rotor gearbox housing (see Figure 1).
- 5.2 Compare the tail rotor gearbox S/N with the S/Ns listed in Table 1.

5.3 If the gearbox S/N is listed in Table 1:

5.3.1 Check helicopter maintenance records for tail chip indications and/or the accumulation of metal flakes on the magnetic plug or in drained transmission oil.

5.3.2 Report any findings to Enstrom:

Aircraft S/N _____ Aircraft Total Time _____

Tail Rotor Gearbox S/N _____

Hours Time-in-Service for each Tail Chip Indication Occurrence _____

Owner _____

Point of Contact _____

Address _____

Phone _____

Email _____

5.4 If the tail rotor gearbox S/N is not listed in Table 1, proceed to the next step.

5.5 To ensure operational performance and safety, continue to perform the recommended tail rotor transmission system servicing schedule and periodic and special inspection schedules in accordance with the TH-28/480 Series Maintenance Manual. Applicable references include the following:

5.5.1 Tail rotor transmission servicing and flushing procedures: Paragraph 4-15 through Paragraph 4-17.1.

5.5.2 Periodic inspection checklists: Paragraph 4-45, Step 10; Paragraph 4-48, Step 5 and Paragraph 11-90, Step E.

5.5.3 Tail rotor chip indication procedures: Paragraph 4-57, Step B.

6. PARTS: N/A

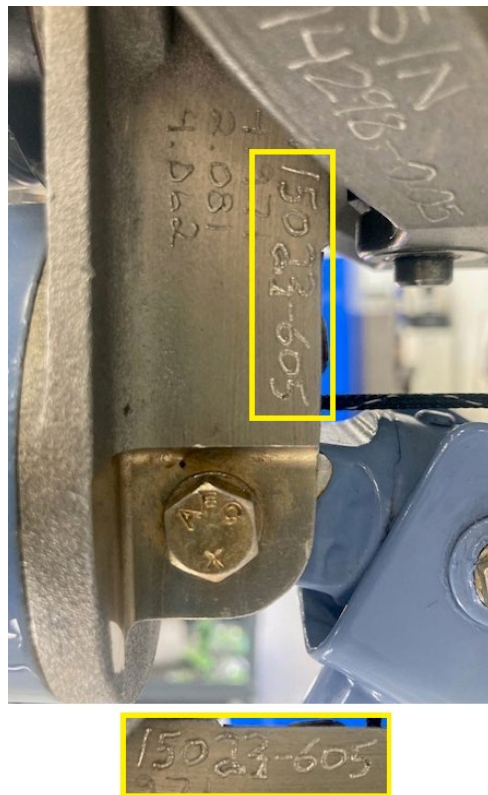
7. SPECIAL TOOLS OR EQUIPMENT: N/A

8. MAN-HOURS: N/A

9. WARRANTY: Per Enstrom policy

10. WEIGHT CHANGE: N/A

- 11. LOG BOOK ENTRY: As necessary for maintenance actions.
- 12. REPETITIVE INSPECTIONS: N/A



Tail Rotor Gearbox S/N 15023-605

Figure 1. Location of Tail Rotor Gearbox S/N Identification – Example

Table 1. Gearbox Serial Number

36-031-99T	09076-0231	13072-329	14112-509	18078-0049
39-058-02T	09076-0233	13072-330	14112-518	18078-0049
41-076-03T	09076-0239	13072-332	14112-522	18078-0051
42-098-04T	09076-0244	13072-333	14364-551	18078-0052
043-0116-04T	09076-0248	13072-334	14364-557	18102-056
045-0138-05T	09076-0249	13072-345	14364-558	18102-060
045-0152-05T	09246-0254	13072-346	14364-564	18102-061
45-0157-05T	09246-0256	13072-347	14364-568	18186-0071
047-0178-06T	09246-0257	13121-360	15023-573	18232-0077
047-0179-06T	09246-0259	13121-364	15023-580	18232-0078
047-184-06T	09299-237	13121-366	15181-629	18232-0080
08291-0211T	09299-262	13121-370	15181-638	18232-0081
08291-0213T	11363-264	13319-428	15181-644	19176-086
08291-0222T	11363-268	13319-429	15181-646	19232-0088
08291-0223T	11363-271	13319-432	16145-0002	19291-0093
08291-0226T	11363-281	13354-449	16222-010	19291-0094
	12299-301	13354-463	17179-0039	19291-0095
	12299-303	13354-474	17324-001	WSNX0195
	12299-313		17332-0047	
	12299-319			
	12299-320			