



# SERVICE INFORMATION LETTER

---

---

SERVICE INFORMATION LETTER NO. 0148

Page 1 of 3

DATE: March 31, 1999

1. SUBJECT: Low Rotor Speed Warning Switch
2. MODEL: F-28F and 280FX
3. EFFECTIVITY: F-28F; All serial numbers equipped with Low Rotor Speed Warning System  
280FX; All serial numbers
4. BACKGROUND:

Enstrom received a report that the low rotor speed warning switch, P/N 726607, did not function properly during a forced landing. The post accident investigation revealed that the low rotor speed warning switch was functioning properly.

This Service Information Letter provides a tie down for the low speed warning switch that will prevent the low speed warning switch from possibly vibrating loose from the electrical connector.

5. COMPLIANCE:

At owner/operator option, modify the installation of the Low Speed Warning Switch, P/N 726607, following the procedures listed in paragraph 5.1.

- 5.1. MODIFICATION:

1. Remove the seat cushions and seat deck to access the low speed warning switch. Refer to the F-28F/280F Maintenance Manual with 280FX Supplement, Figure 21-5 for the location of the low rotor speed warning switch.
2. Note the orientation of the low rotor speed warning switch and remove the switch from the electrical connector.

March 31, 1999

3. Note the orientation of the electrical connector and remove the electrical connector from the bulkhead. If desired, the electrical wiring can be removed from the electrical connector allowing easier modification of the connector. Tag the wires before removing them from the connector.
4. Using a suitable file, modify the electrical connector as shown in Figure 1.
5. Reinstall the electrical connector and if required, reconnect the wiring.
6. Reinstall the low speed warning switch and ensure the switch is fully seated in the electrical connector.
7. Install a tie wrap, P/N WIT-18X, around the low speed warning switch and through the notches in the electrical connector as shown in Figure 2.
8. Reinstall the seat deck and the seat cushions.
9. Perform an operational check of the low rotor speed warning system following the procedures found in Section 4, "Normal Procedures", paragraphs VI and IX, of the F-28F or 280FX Operators Manual.

## 5.2. PARTS:

<u>Description</u>	<u>Part Number</u>	<u>Quantity</u>	<u>Availability</u>
Tie Wrap	WIT-18X or equivalent	1 Each	Enstrom Helicopter Corp. or local procurement
6. SPECIAL TOOLS:	None		
7. MAN-HOURS:	1 Man-hour		
8. WARRANTY:	None		
9. WEIGHT CHANGE:	None		
10. LOG BOOK ENTRY:	Enter compliance with this Service Information Letter.		
11. REPETITIVE INSPECTION:			

Check the low rotor speed warning system for proper operation at every 100 hour/annual inspection.

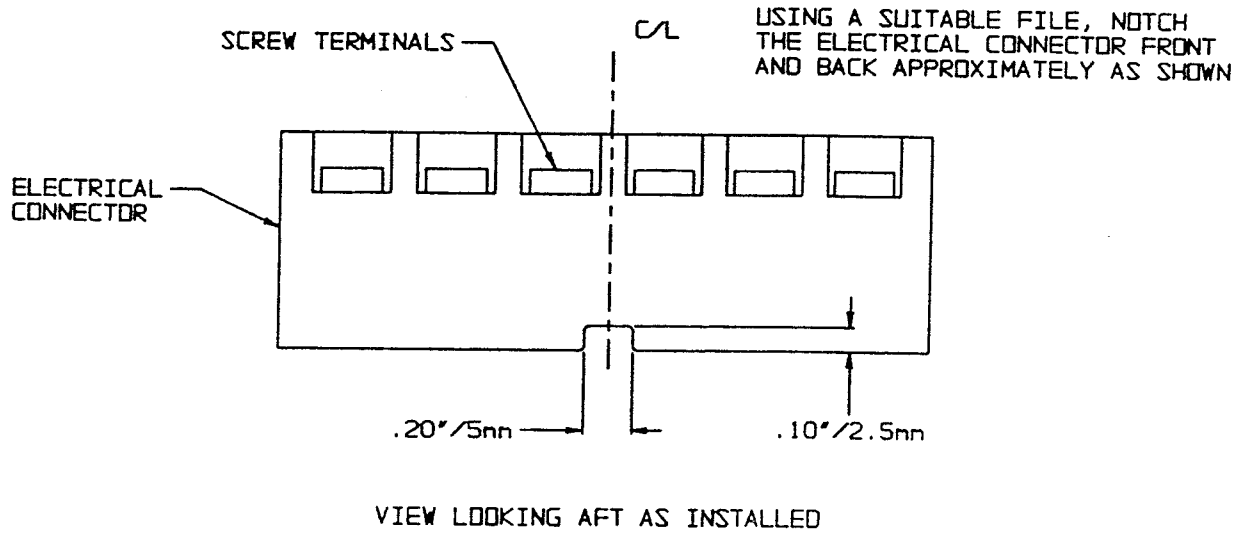


FIGURE 1

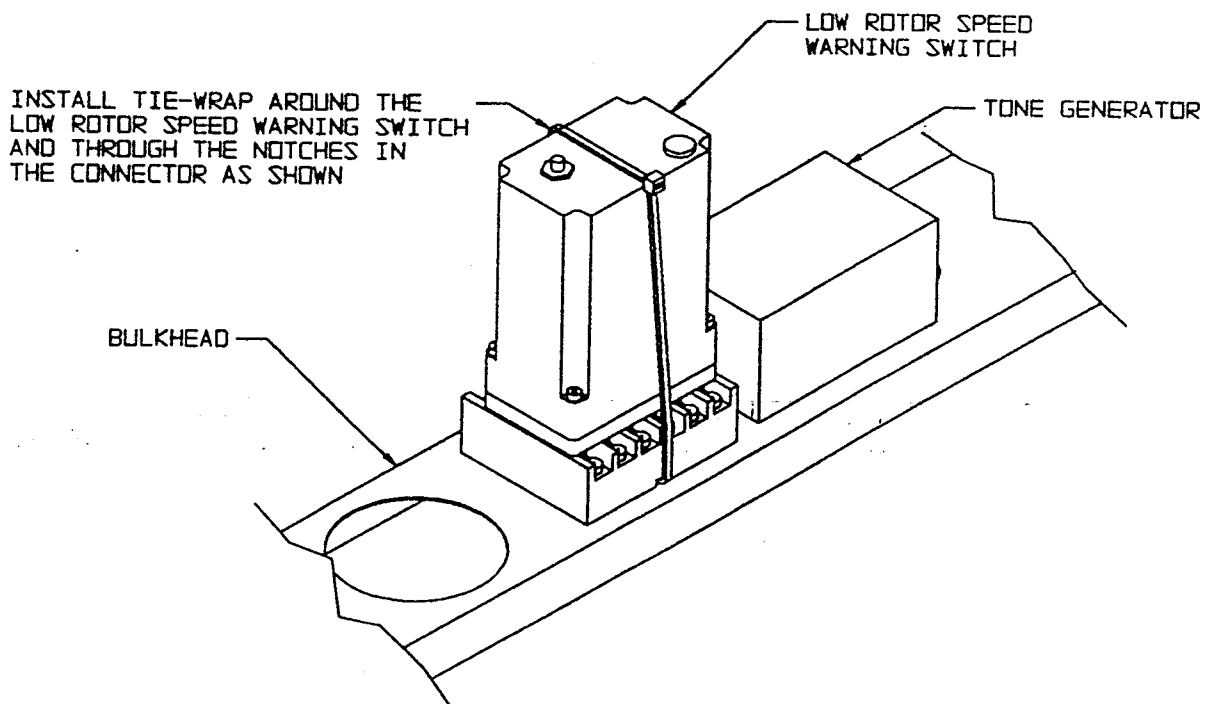


FIGURE 2