



---

## SERVICE INFORMATION LETTER

---

SIL T-057  
Page 1 of 2

DATE:        January 9, 2014

1.    SUBJECT:    Breather Tube Assembly
2.    MODEL:      TH-28 and 480
3.    EFFECTIVITY:    S/N 3006; S/N 5001-5036
4.    BACKGROUND:

Upon investigating a report of unexplained engine oil leakage, a blockage was discovered in the breather tube assembly, which consequently obstructed venting and caused excessive internal engine pressure. The blockage was caused by deformation of the rubber hose adapter in the breather tube assembly.

This SIL (Service Information Letter) informs operators to check the condition of the rubber hose adapter in the case of unexplained engine oil leakage.

5.    COMPLIANCE:

If there is unexplained engine oil leakage, first check the breather tube assembly hose adapter in accordance with paragraph 6 of this SIL.

6.    PROCEDURE:

**Note: Perform all maintenance in accordance with the TH-28/480 Series Maintenance Manual.**

**Note: Refer to the illustration in paragraph 7 for item numbers referenced below.**

- 6.1    Access the hose adapter (46) through the bottom engine access panel.
- 6.2    Remove the clamps (47) on either end of the hose adapter. Remove the line assembly (45) from the gearbox and remove the hose adapter.
- 6.3    Inspect the interior and exterior condition of the hose for deformation (see Figure 1 example).

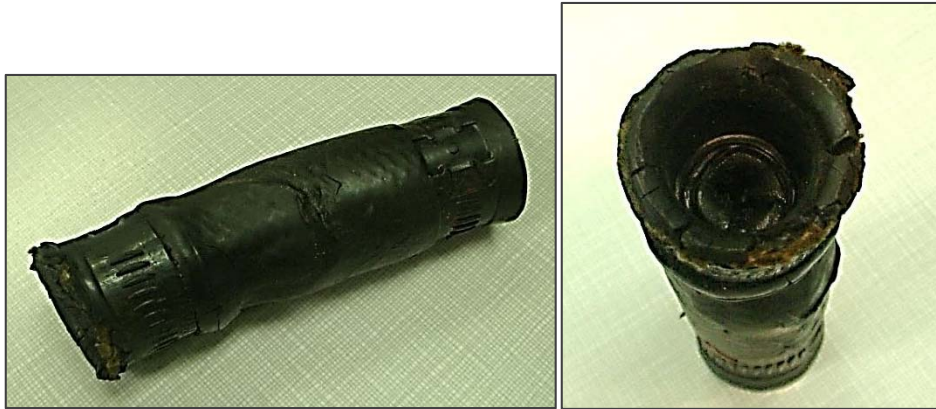


Figure 1. Example of deformed hose adapter, P/N 4120032-11

- 6.4 Reinstall the hose adapter if the condition is acceptable.
- 6.5 Replace the hose adapter if there is evidence of deformation.
- 6.6 Reinstall the line assembly.
- 7. PARTS: See below (TH-28/480 Series Illustrated Parts Catalog, Figure 6-1, sheet 2)

	Item	Part Number	Description	Qty	Effectivity	
					TH-28	480
	46	4120032-11	. Hose Adapter	1	X	X
	46*	4120032-13	. Vent Hose (alternate)	*		
<p>* P/N 4120032-11 may be substituted with P/N 4120032-13 cut to 3.1 in (8 cm) long.</p>						

- 8. SPECIAL TOOLS: N/A
- 9. MAN-HOURS: N/A
- 10. WARRANTY: N/A
- 11. WEIGHT CHANGE: N/A
- 12. LOG BOOK ENTRY: As required for maintenance actions
- 13. REPETITIVE INSPECTIONS: As required in Section 4 of the maintenance manual