



# SERVICE INFORMATION LETTER

---

---

SERVICE INFORMATION LETTER NO. T-006

Page 1 of 3

DATE: October 3, 1997

1. SUBJECT: Improved Fuel Shutoff Valve Operation
2. MODEL: TH-28 and 480 Helicopters
3. EFFECTIVITY: TH-28: Serial Number 3006, 480: Serial Numbers 5001 through 5019 and 5022
4. BACKGROUND:

Enstrom recently experienced two instances of fuel shut off valves that were more difficult to operate than normal. Investigation revealed too much preload on the valve seal. A modification to the tee fitting decreases the preload on the valve seal and allows smoother operation of the fuel shutoff valves. A modification kit is available to change the valve seal preload in the fuel shutoff valve allowing smoother operation of the valve.

5. COMPLIANCE:

At owner/operator option, install the fuel valve seal modification kit, P/N 4230007-1.

- 5.1. MODIFICATION:

1. Remove the fuel shutoff valve assembly from the helicopter in accordance with (I/A/W) the TH-28/480 Maintenance Manual, paragraph 10-26.

2. Remove the lockwire and hardware from the mounting bracket and remove the valve assembly from the mounting bracket. Discard the o-ring located between the valve and the tee.

3. Install the fuel shutoff valve assembly modification kit, P/N 4230007-1, as follows (Refer to Figure 1 or to the drawing provided with the modification kit):

- a. Install the MS28775-113 O-ring into the valve orifice.
  - b. Install the MS28775-020 O-ring into the plate, P/N 4122077-11.
  - c. Orient the fuel flow mark on the plate with the valve (flow mark pointed towards output fitting and ensure flow mark is visible on either left or right side of the valve assembly, refer to Figure 1). Install the plate onto the valve and hold in place.
  - d. Install the MS28775-014 O-ring into the plate.
  - e. Install the tee onto the plate and valve. Ensure the valve control arm and the tee drain elbow are opposite of each other.
  - f. Install the mounting bracket and hardware onto the valve assembly. Torque the hardware to 15-20 in-lbs and lockwire (.025).
- 4. Install the fuel shutoff valve I/A/W the TH-28/480 Maintenance Manual, para. 10-30.
  - 5. Service the fuel cells and check for leaks.
  - 6. Bleed the fuel system I/A/W the Allison 250-C20 Series Operation and Maintenance Manual.

5.3. PARTS:

<u>Description</u>	<u>Part Number</u>	<u>Quantity</u>
Fuel Valve Seal Modification Kit	4230007-1	1 Ea.

6. SPECIAL TOOLS: None

7. MAN-HOURS: 2 hours

8. WARRANTY:

Warranty per Enstrom Warranty Policy. Reference this Service Information Letter and the aircraft serial number when ordering parts.

9. WEIGHT CHANGE: None

10. LOG BOOK ENTRY: Enter compliance with this Service Information Letter.
11. REPETITIVE INSPECTIONS: None
- 

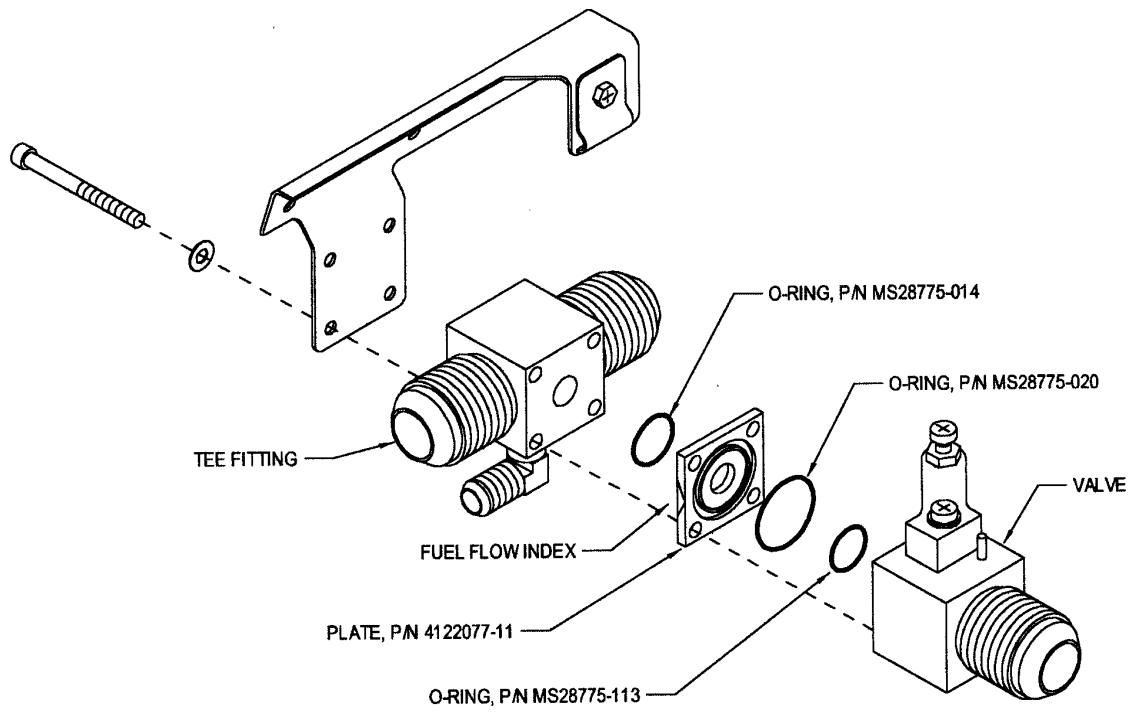


FIGURE 1