



## SERVICE DIRECTIVE BULLETIN

SERVICE DIRECTIVE BULLETIN NO. T-032

Page 1 of 4

DATE: July 25, 2008

1. SUBJECT: Tail Rotor Cable Clearance

2. MODEL: TH-28, 480, and 480B

3. EFFECTIVITY: All

4. BACKGROUND:

Enstrom received a field report of a tail rotor control cable rubbing on a pulley bracket in the tailcone. The cable could wear and lose strength over time. A combination of tolerance stack-up and bracket installation technique are the causes for the interference of the cable with the pulley bracket.

This Service Directive Bulletin (SDB) requires a one time inspection of the tail rotor cable clearance with the pulley bracket, and if required, modification of the pulley bracket assembly.

Technical aspects of this SDB have been coordinated with the FAA.

5. COMPLIANCE:

Within 25 hours time in service or at the next scheduled inspection, which ever occurs first, inspect the tail rotor cable alignment in accordance with paragraph 5.1 of this Service Bulletin Directive and if required, modify the pulley bracket assembly in accordance with paragraph 5.2 of this Service Directive Bulletin.

## 5.1. INSPECTION:

**NOTE**

**Perform all maintenance IAW the TH-28/480 Series Maintenance Manual.**

- A. Open the left and right side closure panels behind the aft horizontal stabilizers.
- B. Inspect the left and right tail rotor cables routing through the bulkhead holes. See Figure 1.
- C. If the left or right tail rotor cables have adequate clearance (minimum 0.030") with the pulley bracket, no action is required.

**NOTE**

**Inspect the left and right tail rotor cables for clearance with the pulley brackets.**

- D. If either the left or right tail rotor cable is rubbing against the pulley bracket or the pulley bracket shows wear from the cable, proceed to step 5.2 to increase the clearance between the cable and the pulley bracket.

## 5.2. REPAIR:

**NOTE**

**Perform all maintenance IAW the TH-28/480 Series Maintenance Manual.**

- A. Disconnect the tail rotor cables from the gear box.
- B. Remove the interfering pulley bracket, existing spacer, and bolt. Reference Figure 2.
- C. If the left side pulley bracket is removed, install new pulley bracket P/N 4230033-13. If the right side pulley bracket is removed, install new pulley bracket P/N 4230033-11. Trim flange as necessary for fit. Use existing rivet locations in the bulkhead.
- D. Two (2) AN960-10 washers can be located on either side of pulley depending on location of interference. Use AN3-7 bolt to install pulley to the bracket assembly.
- E. Locate and drill hole for spacer through the pulley bracket assembly. Install spacer P/N 4230033-15.
- F. Reconnect the tail rotor cables.
- G. Check tension/rigging per the maintenance manual.

## 5.3. PARTS:

Description	Part Number	Quantity
Pulley Bracket (RH)	4230033-11	1
Pulley Bracket (LH)	4230033-13	1
Spacer	4230033-15	2
Bolt	AN3-7	2
Washer	AN960-10	4
Cotter Pin	AN381-12	2
Rivet	MS20470AD4-4	6

6. SPECIAL TOOLS: None

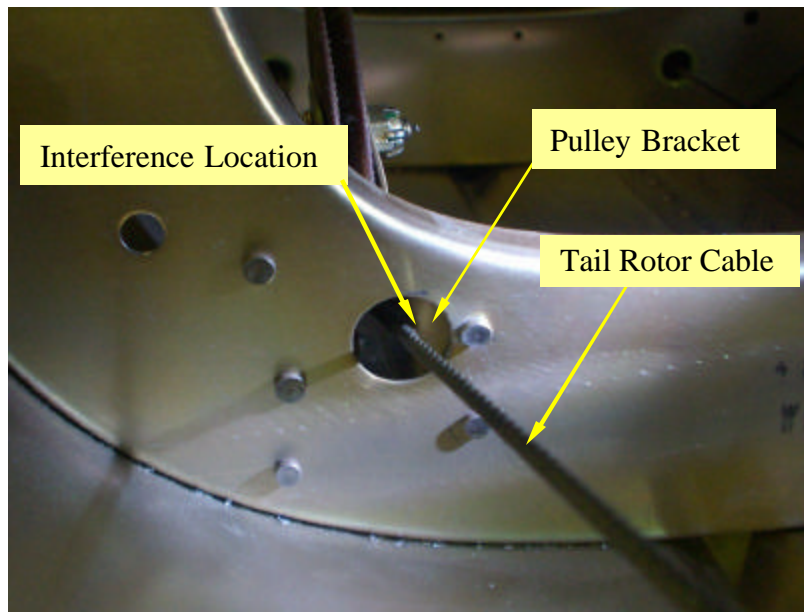
7. MAN-HOURS: Four (4) man-hours for the repair

8. WARRANTY: Per Enstrom New Helicopter Warranty policy

9. WEIGHT CHANGE: None

10. LOG BOOK ENTRY: Enter compliance with this SDB in the aircraft maintenance records.

11. REPETITIVE INSPECTIONS: None



**Figure 1. Pulley Assembly (Left Side Shown)**

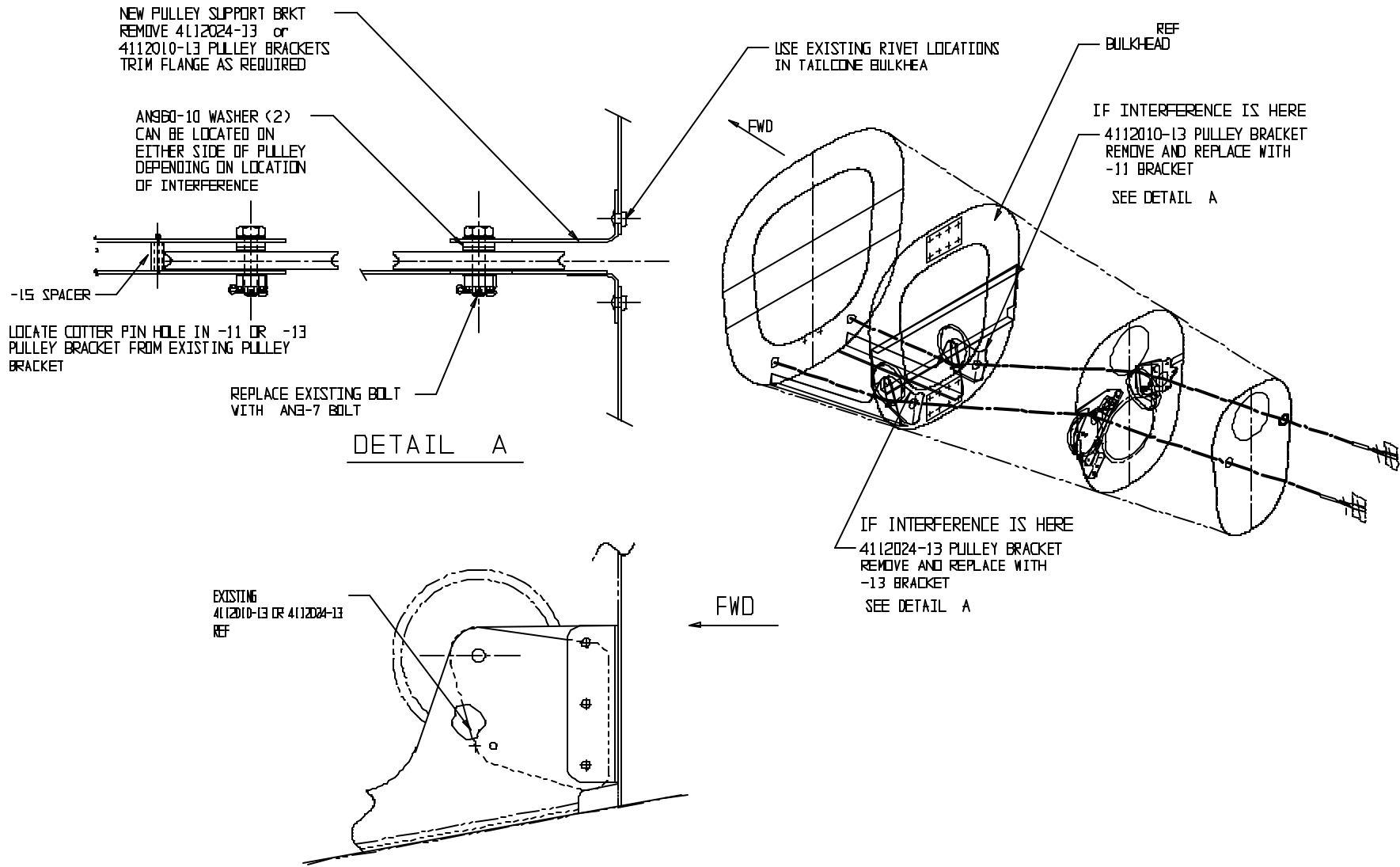


Figure 2. Pulley Assembly Repair Installation