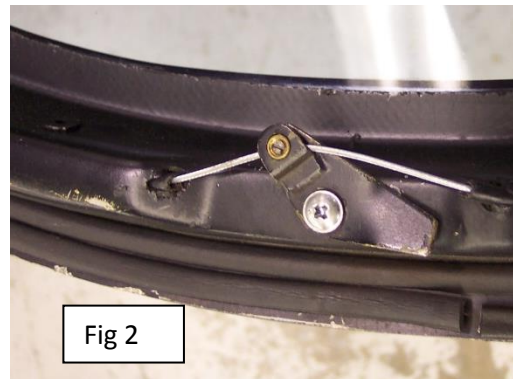
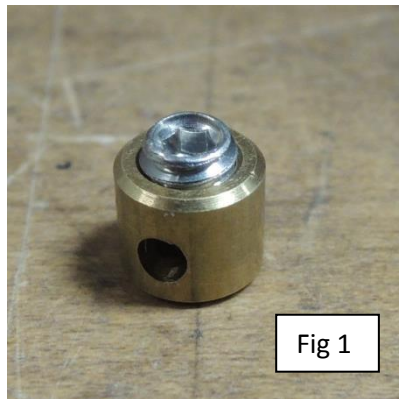


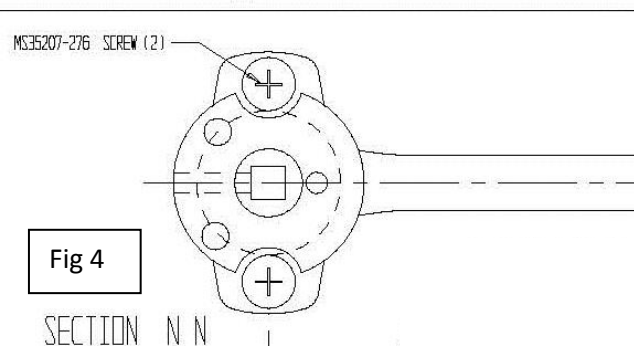
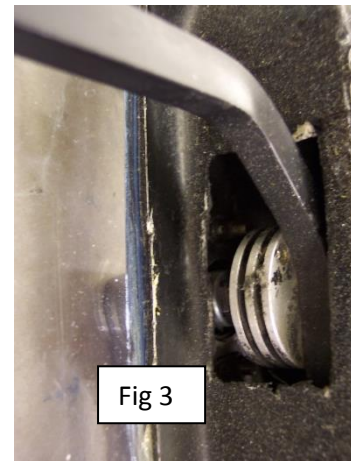
Installing new door cables in F doors

The cable is held at the upper and lower door catch, and at the main handle pulley by small bronze bushings with an internal wrenching lock screw. (ECD093-11)



To replace the cables it is easier to remove the pulley assembly from the door.

1. Remove top and bottom latch assemblies. (Fig 1)
 - 1.1. Catch the lock screw assemblies (Fig 2)
2. Remove the main latch pulley assembly.
 - 2.1. Remove the cover plates from the door frame.
 - 2.2. Remove the plugs from the door frame.
 - 2.3. Remove the MS35207-276 screws that secure the outside door handle. (Fig 4) They are inside the door and can be accessed through a hole in the door frame. (Fig 5)



- 2.4. Remove the screws holding the outside handle assembly to the door frame.
- 2.5. Remove the handle from the pulley. Turn the inside handle so the internal wrenching screw can be accessed, and loosen the screw. (Fig 6)
- 2.6. Withdraw the handle from the pulley.
3. Remove the pulley and inside handle assembly from the door by loosening the two lock screw assemblies (Fig 1 & Fig 4) and pulling the cables out of the ferrules.
4. Thread a new cable through cable sheaths in the door frame. Lubricate the cables with Tri-Flow or similar lubricant.
5. Install the top and bottom latch assemblies but do not tighten the lock screw assemblies at this time.
6. Thread the cable into the lock screw assemblies in the pulley, do not cut the cable at this time.
7. Place the pulley assembly back into the door frame and insert the outside door handle.
8. Install the two screws securing the door handle to the door frame. (Fig 4 & Fig 5)
9. Lock the pulley to the outside handle by tightening the set screw. The location of the pulley on the handle is important.
10. Lock one of the lock screw assemblies in the pulley assembly, and grip the other end with a small vice grip.
11. While jiggling the handle assembly back and forth, pull the cable tight with the vice grip. The upper and lower latches must lay flat during this process. (Fig 2)
12. When the cable is tight, lock the second cable lock screw in the pulley.
13. Place the door handle in the closed position and place the upper and lower latch assemblies in the locked position.
14. Close the door and operate the handle while observing the top and bottom latches.
15. If the cable doesn't seem tight enough, it may be necessary to repeat steps 11 – 13.
16. When the door handle and latches work properly, the cables may be trimmed at the pulley and the cover plates reinstalled.

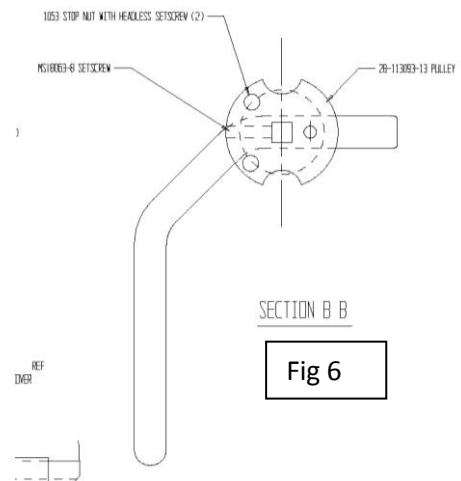


Fig 6

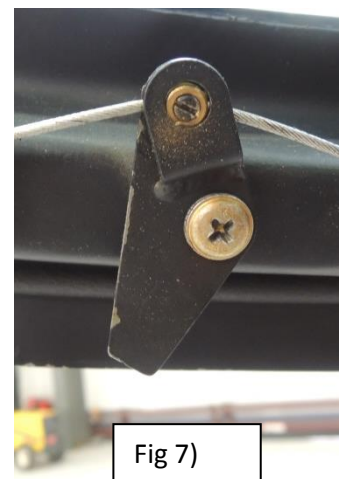


Fig 7)