



THE ENSTROM HELICOPTER CORPORATION
TWIN COUNTY AIRPORT, P.O. BOX 490, MENOMINEE, MICHIGAN 49858

SERVICE INFORMATION LETTER

SERVICE INFORMATION LETTER NO. 0057
Page one

Date: January 27, 1977
Subject: Main Rotor Gearbox Retention Bolts
Models: F-28A, 280, F-28C, 280C
Effectivity: As Noted Below

An isolated occurrence has been reported of one main rotor gearbox retention bolt failure. The AN6-33 bolt failed under the head and was a direct result of a nonparallel surface under the bolt head and washer.

In order to reduce the possibility of a recurrence of this problem in the field, the following change is recommended.

On all main rotor gearboxes prior to S/N 42-006-76PS, the (4) AN6-33 retention bolts should be removed and replaced with (4) NAS146A-61 bolts, (4) MS20002-6 washers, (4 sets) SPW-3 spherical washers, (4) AN310-6 nuts, (4) AN381-3-18 cotter pins, and installation of AN960-616 washers as required under nut. See Figure 1 on page two.

This change should be made at the owner's convenience or at the next 100-hour inspection.

The required hardware for this change can be purchased from the Enstrom Customer Service Department.

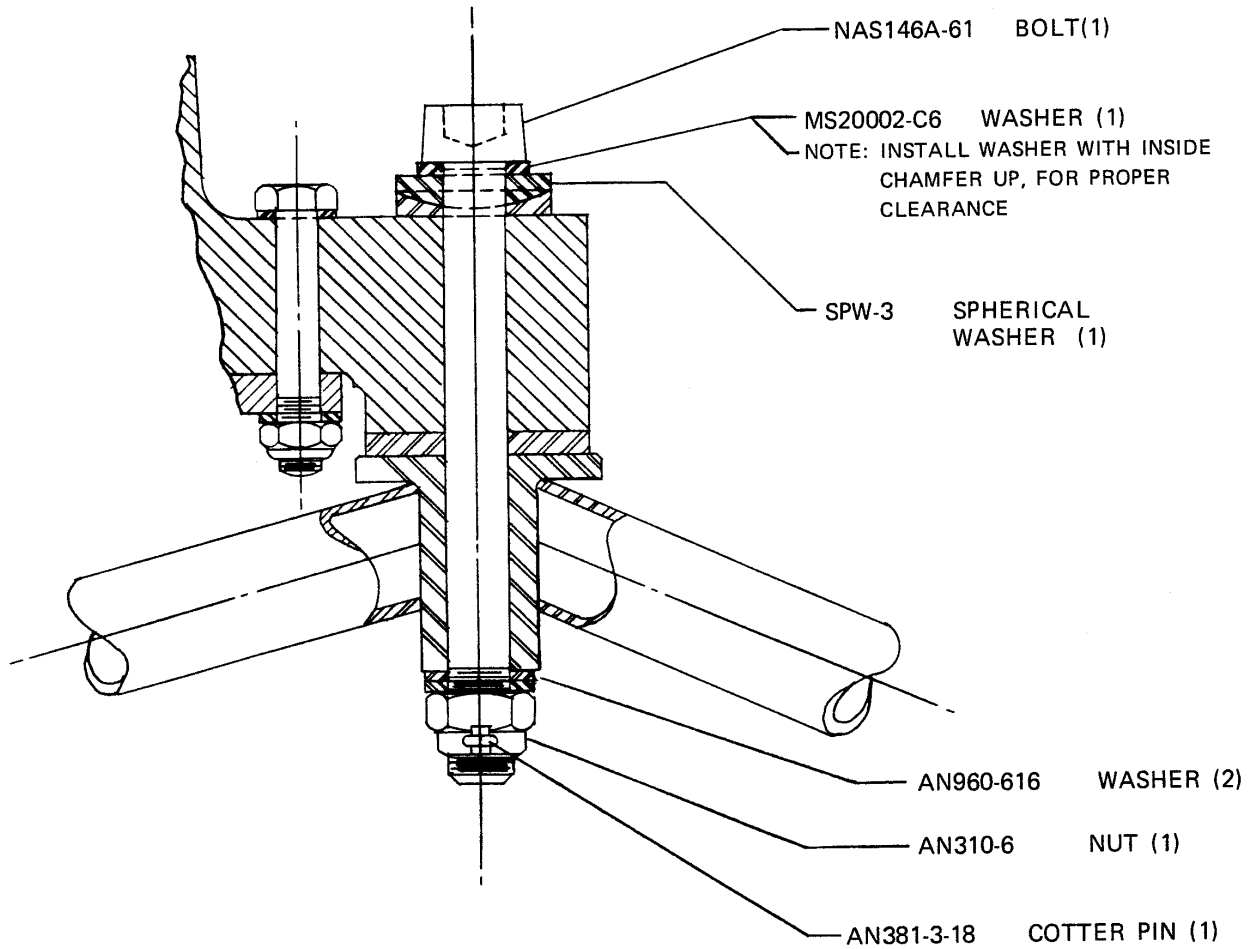


Fig. A-2