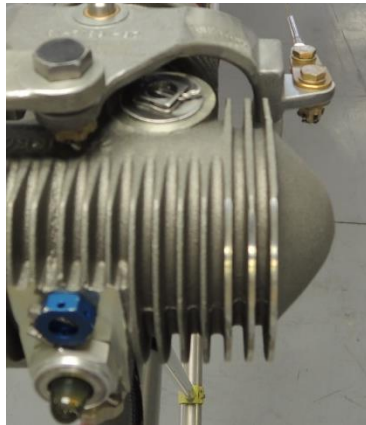


# TRGB flushing procedures



## 11-94. TRGB Flushing Procedures

- A. Remove the top inspection plug, filler plug, and sight glass from the gearbox.
- B. Remove the bottom drain plug (chip plug) and drain the oil.



- C. Inspect gears and gearbox internally for damage and condition.
- D. Use a syphon sprayer with kerosene, mineral spirits or equivalent oil based solvent to spray down the interior of the gearbox. Direct the aim of the sprayer around the inside of the gearbox to flush the input and output bearings, while rotating the gearbox.
  1. The objective is to introduce sufficient volume of solvent to flush any debris out of the gearbox.
- E. Loosely install the bottom drain plug, sight glass, and fill plug.
- F. Add ½ qt of the gear lube that is currently being used in the gearbox.
- G. Rotate the gearbox by hand 7-10 revolutions.
- H. Remove the drain plug and drain the gearbox while rotating the gearbox.
- I. Allow gearbox to drain completely
- J. Install and secure the top inspection plug, sight plug, and bottom drain plug.
  1. Torque top inspection plug to 60 in-lbs.
  2. Torque the sight glass to 20–60 in-lbs.
  3. Torque the drain plug to contact plus 270°.
- K. Service the gearbox in accordance with section 4-15 in the TH-28/480 maintenance manual and section 4-15 in the Enstrom F-28/280F series maintenance manual.
  1. Torque the filler plug to 72 to 84 in lbs.