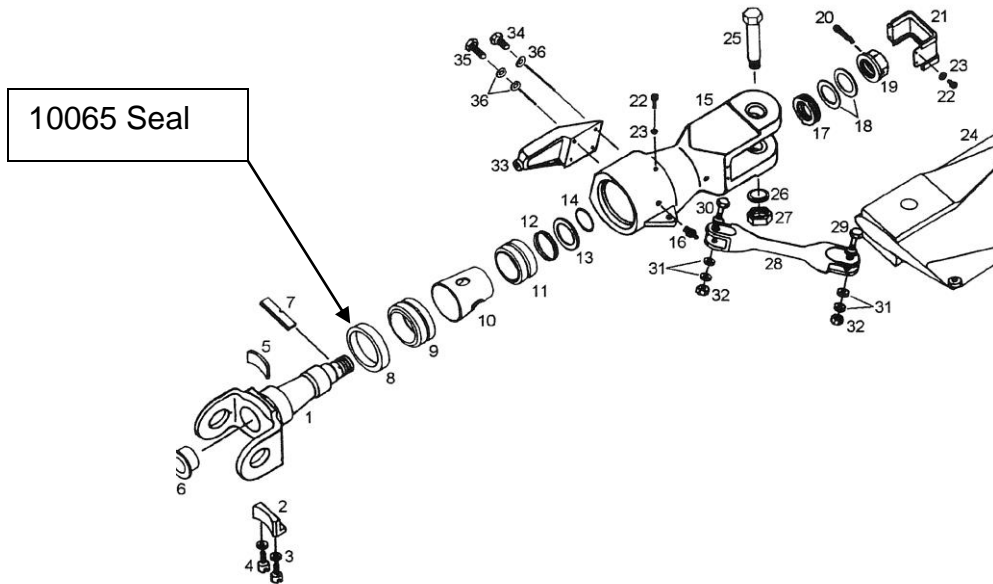




Purge-locking the Grips

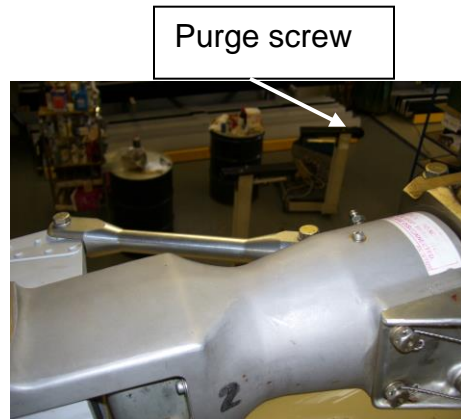


Occasionally following lubrication of the rotor hub, an operator may notice cyclic stick swirl after start up, or a sudden rough ride.

It is possible to push the 10065 seal (8) out of the grip while purging the grip. If this happens, the seal may jam against the spindle (1) and give the effect of a malfunctioning lamiflex bearing. The seal is intended to be installed in the reverse direction in relation to the normal installation of lip seals to prevent pressurizing the grip when greasing.

To re-seat the lip (10065) seal (8) in its proper position use the following procedure:

1. Remove the purge screw from the top of the grip.



The seal must not be visible in this gap.

2. Insert the blade of a flat head screw driver between the seal and the spindle and carefully work the seal outboard and back into the grip. Some grease should be displaced out of the purge hole as the seal is pushed back into place.

3. Reinstall the purge screw.

