





- Using a radius gauge, measure the radius as shown in figure 2.



Figure 2

- Alternate method for step. 2, using a NAS1149DO663H, or AN960D616 washer, or a dime, identify the -13, or -11 radius as shown in figure 3.

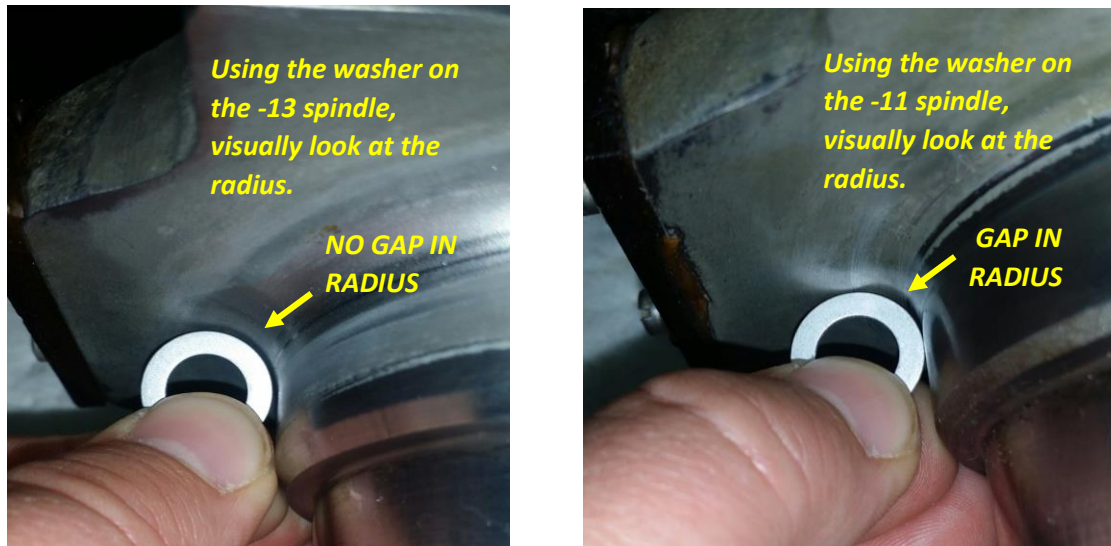


Figure 3

- After the radius has been identified, correct the component card if necessary with the appropriate dash number.