



SERVICE DIRECTIVE BULLETIN

SERVICE DIRECTIVE BULLETIN NO. T-048

Page 1 of 3

DATE: September 18, 2014

1. SUBJECT: Engine Idle Stop Assembly, P/N 4167370-1
2. MODEL: 480B
3. EFFECTIVITY: S/N 5136 through 5189, 5192 through 5197, 5200 through 5202;
 CGAI #51157 (EHC #1217); and
 Spare Part Assembly, P/N 4167370-1, shipped prior to August 31, 2014

4. BACKGROUND:

During a factory inspection of an engine idle stop installation, it was discovered that the set screw used to lock the pivot arm to the engine power controls was loose.

This SDB (Service Directive Bulletin) requires an inspection of the set screw for tightness and clarifies the procedure for properly installing the set screw.

5. COMPLIANCE:

Before the next engine start, verify the engine idle stop operates properly per paragraph 6. If the engine idle stop operates normally, inspect the set screw for looseness within the next five hours. If the engine idle stop does not operate normally, inspect and repair the engine idle stop per paragraph 7 before the next engine start.

For a replacement (spare) engine idle stop assembly, inspect the set screw for looseness and repair per paragraph 7 prior to installation.

CAUTION

Engine shutdown is crucial in engine hot start or fire circumstances.

NOTE

If the engine idle stop does not operate properly, the engine can be shut down by pulling the main fuel shutoff valve.

6. ENGINE IDLE STOP OPERATION CHECK:

- 6.1 With the engine off, twist throttle past IDLE.
- 6.2 Twist throttle against the idle stop and hold using gentle pressure.
- 6.3 Press the red IDLE STOP release button.
- 6.4 Verify the throttle moves to the OFF position.

7. INSPECTION:

NOTE

Perform all maintenance in accordance with the TH-28/480 Series Maintenance Manual. In particular, refer to paragraphs 13-102.1 through 13-102.5 for removal, inspection, and installation procedures related to the engine idle stop assembly.

- 7.1 Remove the pilot's seat and, as applicable, stow (fold-up) the center bench seat or remove the 2+2 bench seat.
- 7.2 Remove the center torque tube cover.
- 7.3 Remove the idle stop assembly cover (Figure 1).
- 7.4 Inspect the set screw for looseness.
- 7.5 Properly install the set screw as follows:
 - 7.5.1 Remove the set screw and apply threadlocker (see Parts, Paragraph 8).

CAUTION

The set screw must engage the detent on the rotary solenoid shaft.

- 7.5.2 Install set screw and ensure it engages the detent in the rotary solenoid shaft and tighten the set screw to seat it in the detent.
- 7.5.3 Back-off the set screw $\frac{1}{4}$ turn and re-tighten. Repeat this twice and then tighten the set screw firmly against the shaft.
- 7.6 Check the idle release for proper operation. Also, move the pilot collective stick up and down through the full range of movement to check for free movement of all components.
- 7.7 Reinstall the idle stop assembly cover.
- 7.8 Reinstall the center torque tube cover.
- 7.9 Reinstall the seats, as applicable.

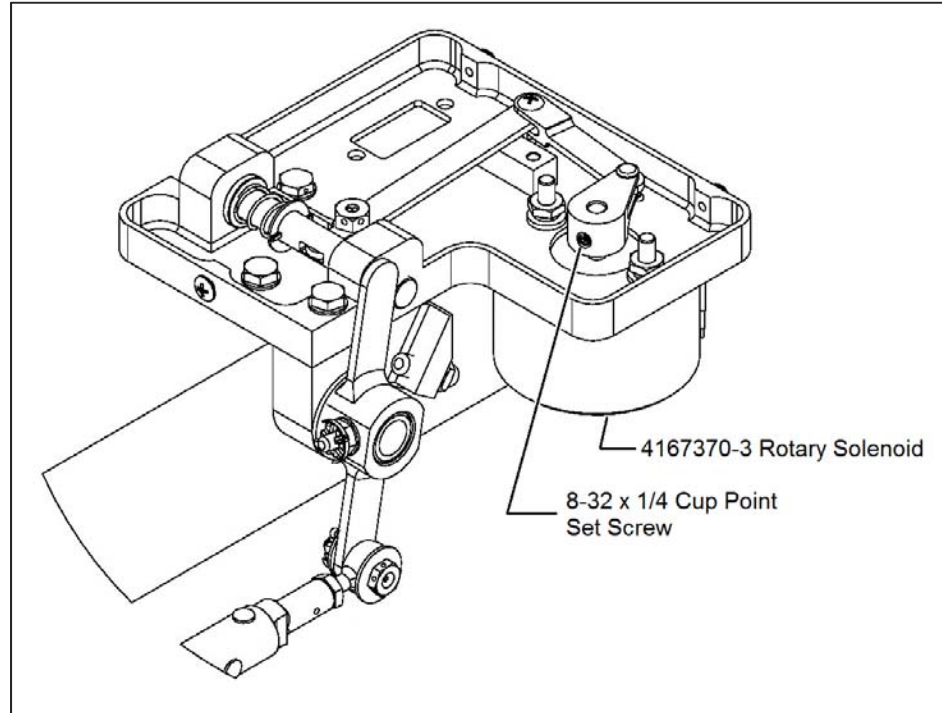


Figure 1. Engine Idle Stop Assembly

8. PARTS: Threadlocker: Loctite 222, or Vibra-Tite VC-3, or equivalent
9. SPECIAL TOOLS: N/A
10. MAN-HOURS: Inspection: 15 minutes
11. WARRANTY: Per Enstrom Warranty Policy
12. WEIGHT CHANGE: None
13. LOG BOOK ENTRY: As required for maintenance actions.
14. REPETITIVE ACTION: N/A