



SERVICE DIRECTIVE BULLETIN

SERVICE DIRECTIVE BULLETIN NO. T-027

Revision 1

Page 1 of 6

DATE: January 7, 2008

1. SUBJECT: Overrunning Clutch Cover Equipped With A Sight Plug
2. MODEL: TH-28, 480, 480B
3. EFFECTIVITY: TH-28/480: All serial numbers
480B: Serial number 5095 and prior

4. BACKGROUND:

Enstrom has released a redesigned overrunning clutch cover that is equipped with a sight plug for visually checking the oil level in the overrunning clutch.

This Service Directive Bulletin (SDB) provides instructions for installing the sight plug equipped overrunning clutch cover.

5. COMPLIANCE:

At or before the next 100 hour/annual inspection, install the sight plug equipped overrunning clutch (ORC) cover in accordance (IAW) with paragraph 5.1.

Compliance with this SDB supercedes SDB T-022.

5.1. MODIFICATION:

NOTE

Perform all maintenance IAW the TH-28/480 Series Maintenance Manual (MM).

- A. Open and/or remove the left side engine access panel.
- B. Drain the oil from the ORC and remove the cover (MM, para. 11-5. H & I).

January 7, 2008

- C. Remove the service plugs from the old ORC cover and discard the o-rings. Install new o-rings on the service plugs.
- D. Install two of the three service plugs into the new ORC cover.
- E. Install the new ORC cover (MM, para. 11-8. D).
- F. Service the ORC and install the remaining service plug (MM, para. 4-10).
- G. Reinstall and/or close the left side engine access panel.

5.2. PARTS: Refer to Figure 1 and the following table.

Item	Description	Part Number	Quantity
--	. Overrunning Clutch Kit (includes items 1-5)	4230050-1	1 Ea
1	.. Cap (Cover)	4131008-15	1 Ea
2	.. Sight Plug	S83BZ-2	1 Ea
3	.. O-ring	M25988/1-906	1 Ea
4	.. O-ring	2-041	1 Ea
5	.. O-ring	NAS1612-2	3 Ea

5.3. CONTACT INFORMATION

Enstrom Product Support

Tel: 906-863-1200

Fax: 906-863-6244

email: customerservice@enstromhelicopter.com

- 6. SPECIAL TOOLS: None
- 7. ESTIMATED MAN-HOURS: 1 Man-hour to install the new ORC cover.
- 8. WARRANTY:

Parts listed in para. 5.2 and 1 Man-hour of labor provided under warranty. Provide this SDB number and aircraft serial number when ordering the parts listed in para. 5.2. Submit completed warranty form.

- 9. WEIGHT CHANGE: None

January 7, 2008

10. LOG BOOK ENTRY:

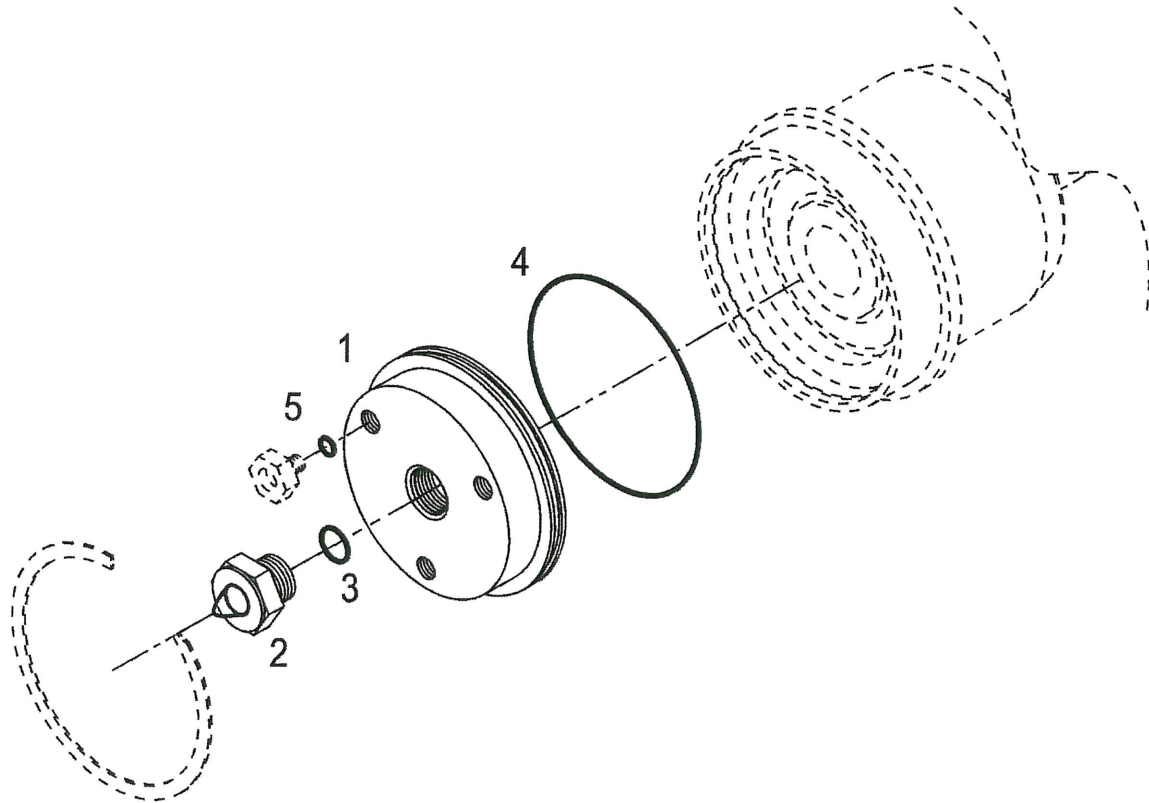
Enter compliance with this SDB in the aircraft maintenance records.

11. REPETITIVE INSPECTIONS:

Service the overrunning clutch IAW MM, para. 4-10 when no oil is visible in the sight plug. If the oil level in the sight plug is full at the scheduled 50 hour service interval, the scheduled service interval can be increased to 100 hours.

If the overrunning clutch requires servicing after less than 10 flight hours and there is no evidence of external leaks from the ORC bearing housing seal or the power output shaft bearing housing seal, replace the double lip seals (P/N 23063426) in the engine gearbox assembly at the next 100 hour/annual inspection.

January 7, 2008



- (1) Cap (Cover)
- (2) Sight Plug
- (3) O-ring

- (4) O-ring
- (5) O-ring

Figure 1. ORC Cover Equipped with Sight Plug

January 7, 2008

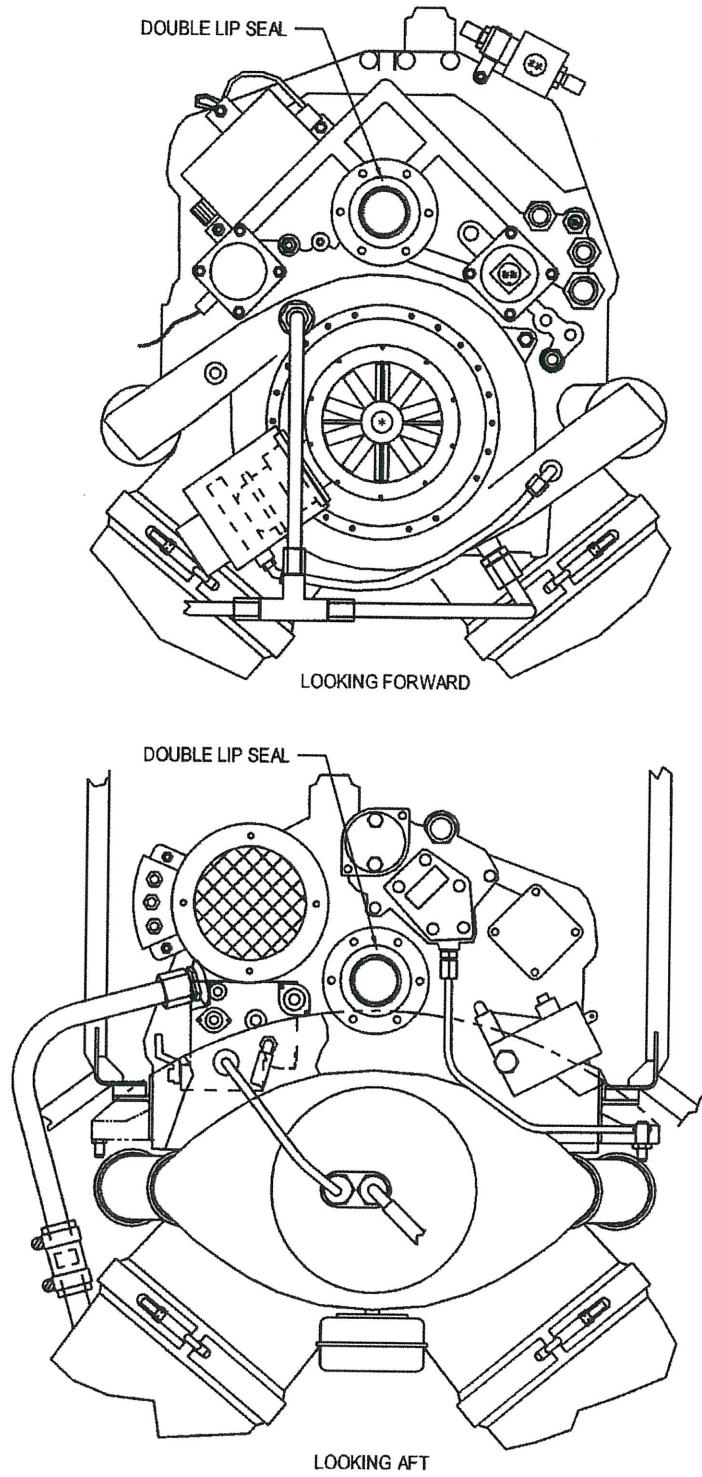


Figure 2. Double Lip Seal Locations

January 7, 2008

INTENTIONALLY LEFT BLANK